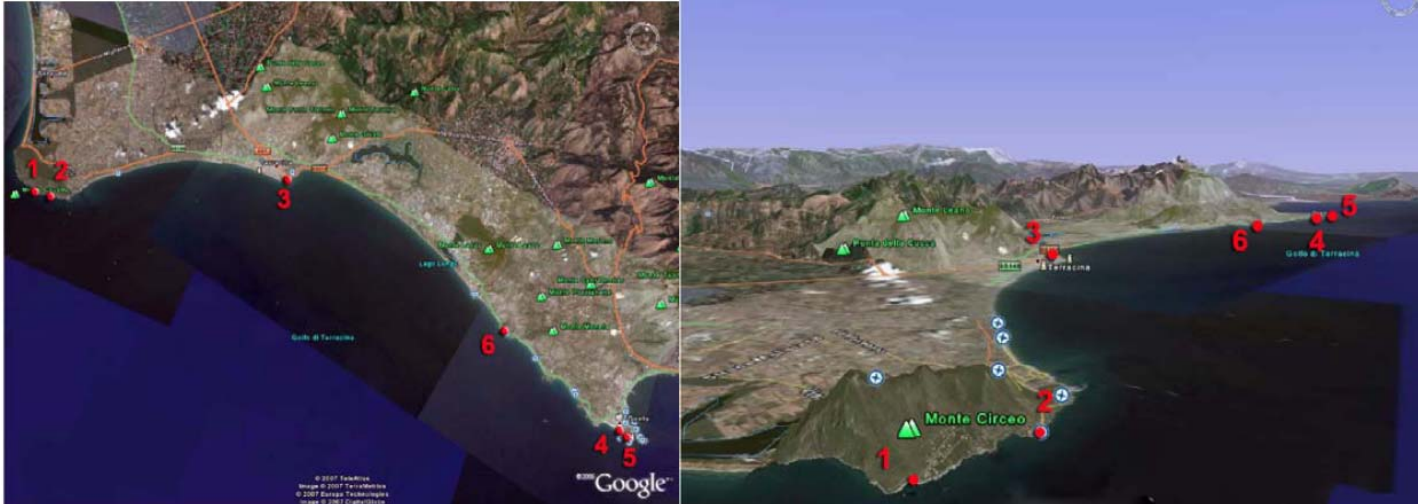
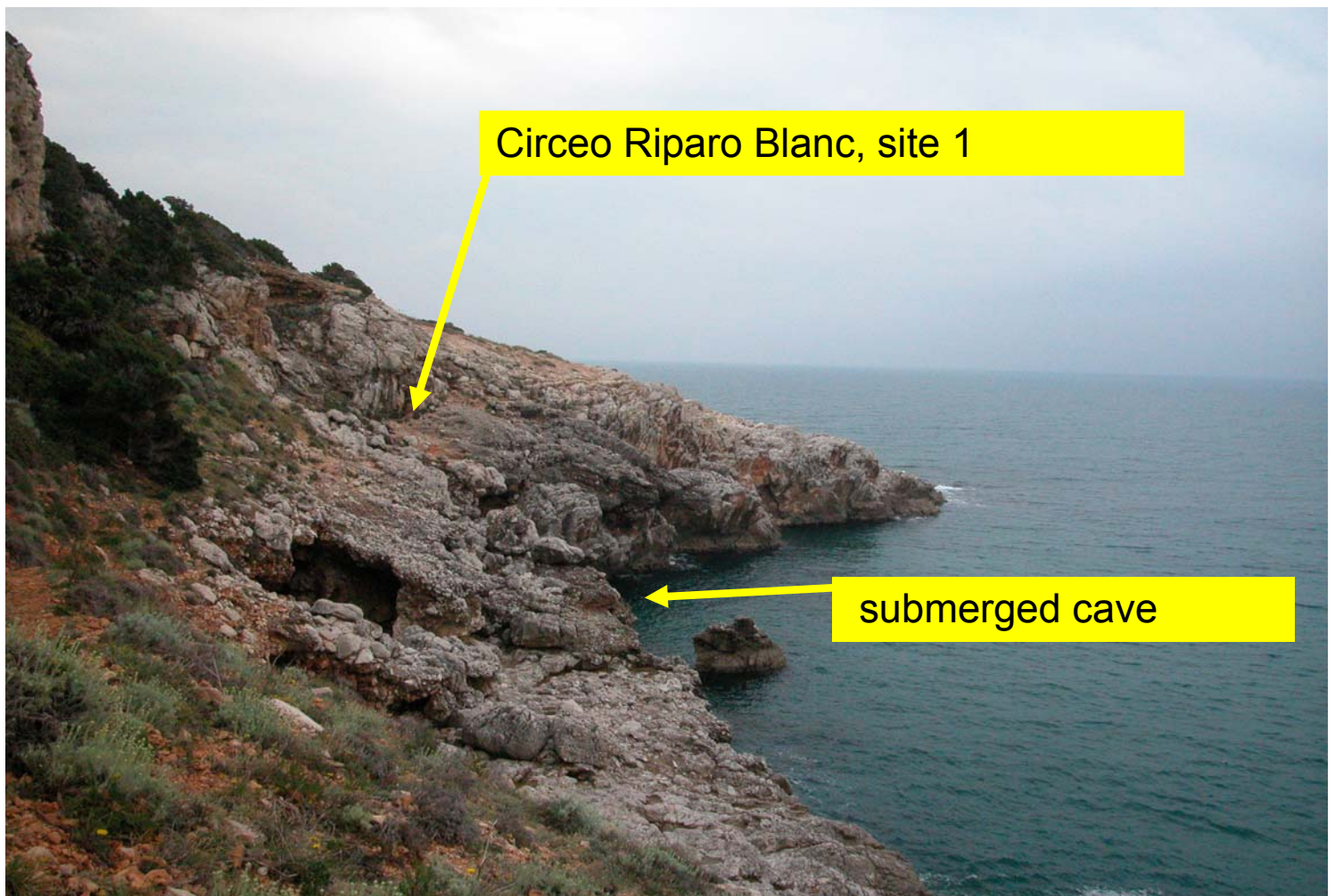


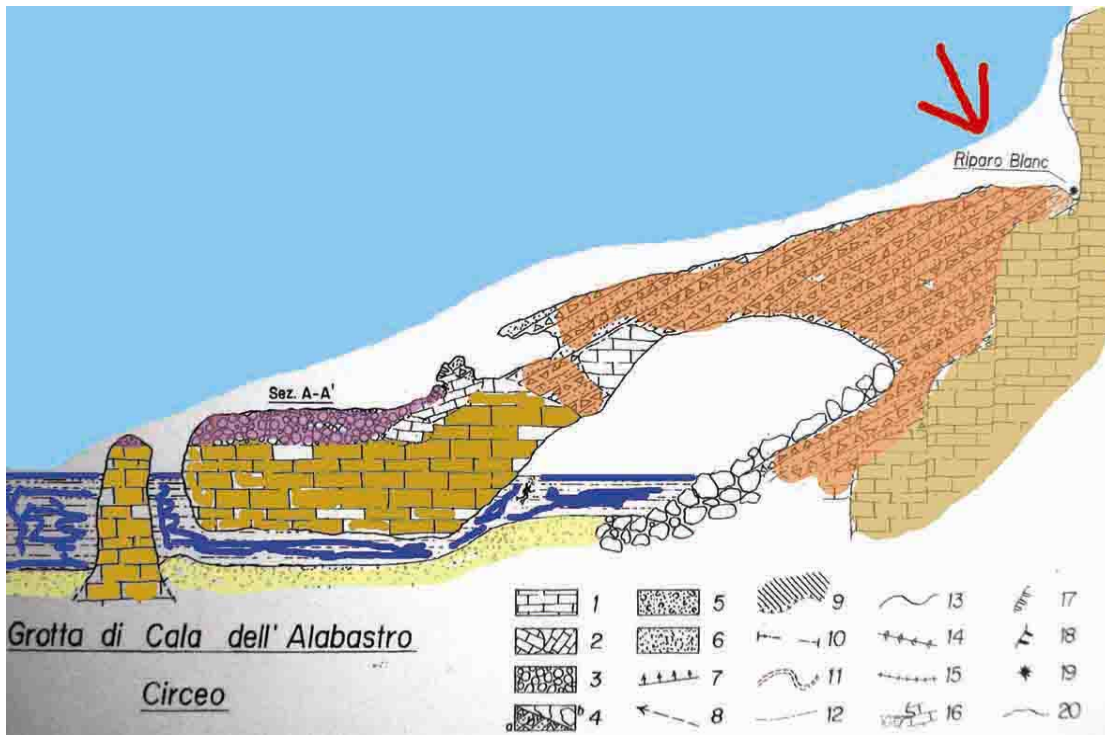
PALSEA2 Rome meeting, one day fieldtrip.



Stop 1 Circeo Promontory, Riparo Blanc

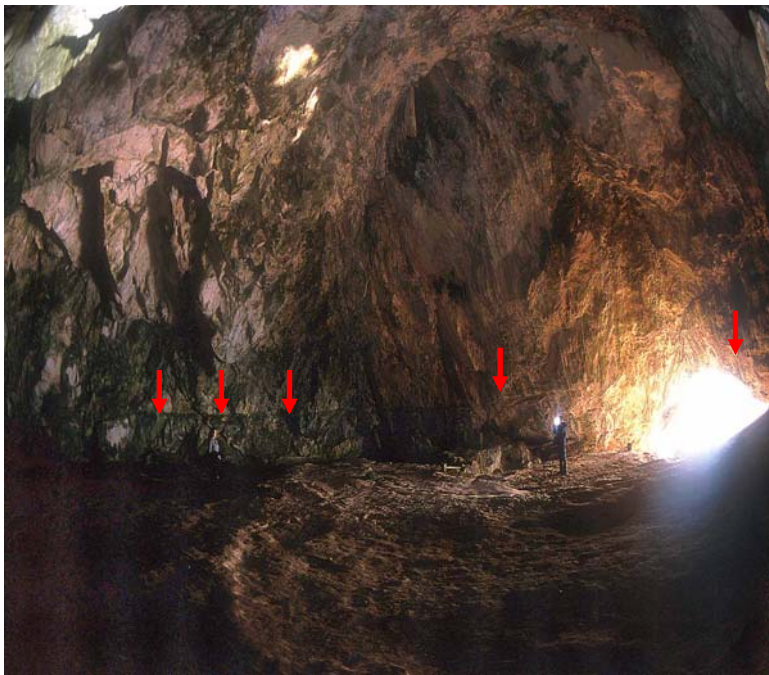
We will visit this Riparo Blanc, studied in 1962. We will see a continental deposit filled by marine shells and Coal . The C^{14} analysis gave 8565, about 9800 cal BP: Mesolithic.





This section shows the presence of an underwater cave at -8 m that we hope could contain Mesolithic remains, we will show a film of the submerged cave exploration.

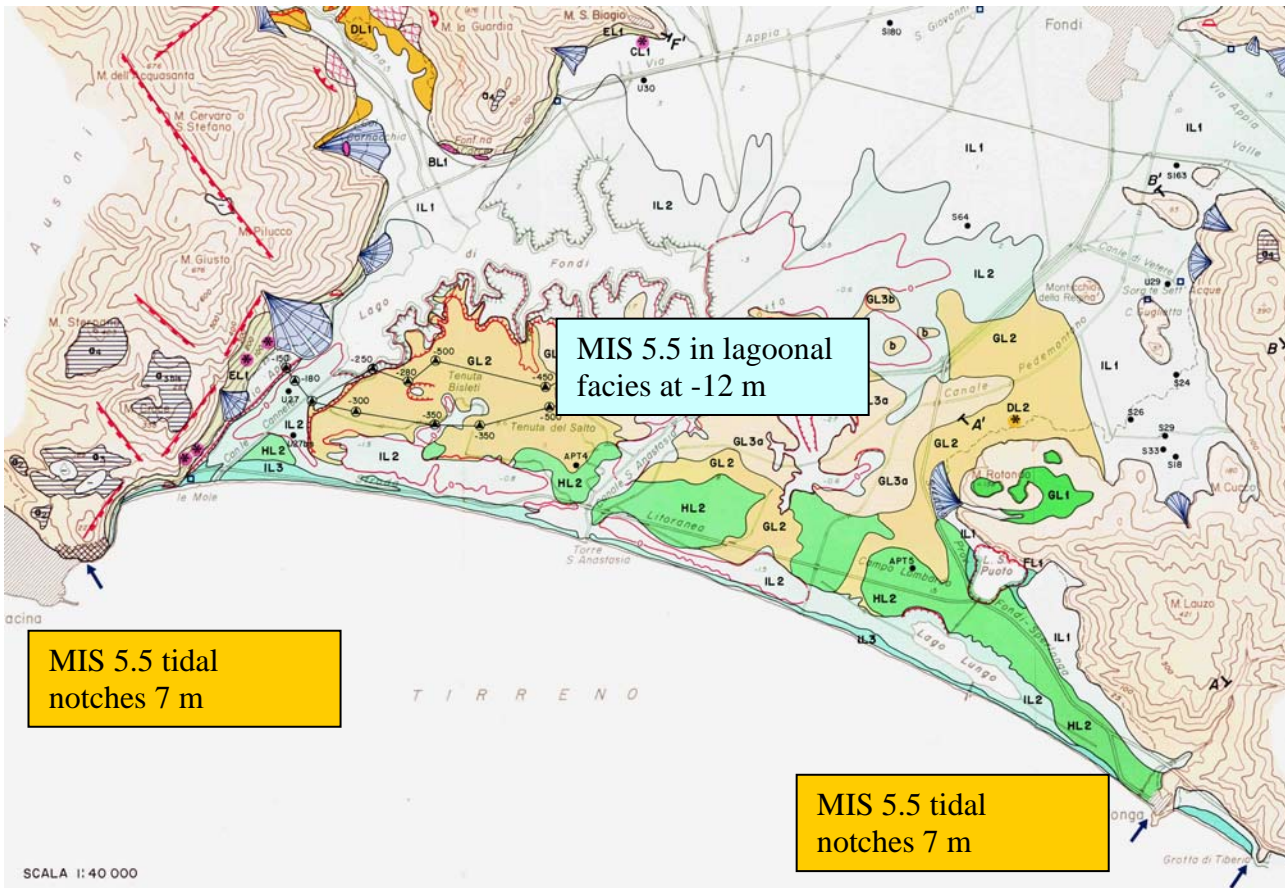
Stop2 Grotta delle Capre



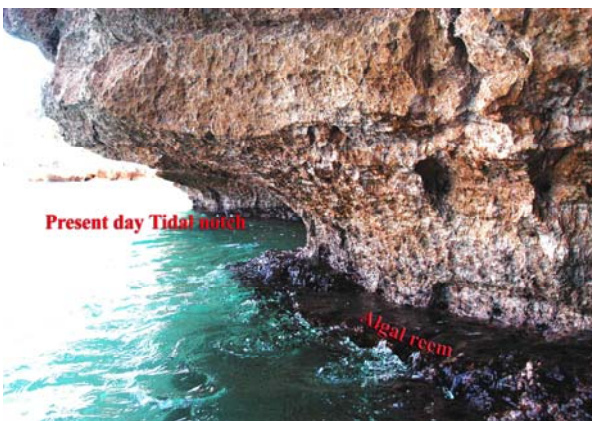
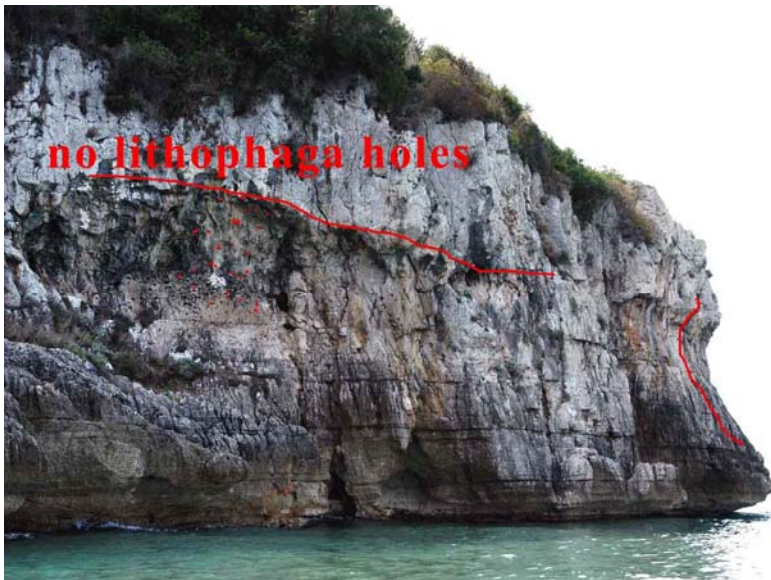
In this cave we will see a MIS 5.5 tidal notch at 9.8 m., and some archaeological excavations on Paleolithic remains

Stop 3 Pisco Montano and MIS 5 notch, Fondi Plain

South of Terracina there is an artificial excavation on the limestones, the "Romans" made it in order to allow a passage of the old via Appia (Roma-Brindisi). At the base of the Pisco Montano there is a MIS 5.5 notch at an altitude of 7.3. On the coastal plain of Fondi (south) the MIS 5.5 was found in cores at -12. The Plain is slowly subsiding, also the Aeolian dunes are MIS 5.5.



Stop 4 Gaeta Montagna Spaccata: MIS 5.5 notches Present day notches and tide gauge measurements, Lythopyllum algal reem, Erosional rates



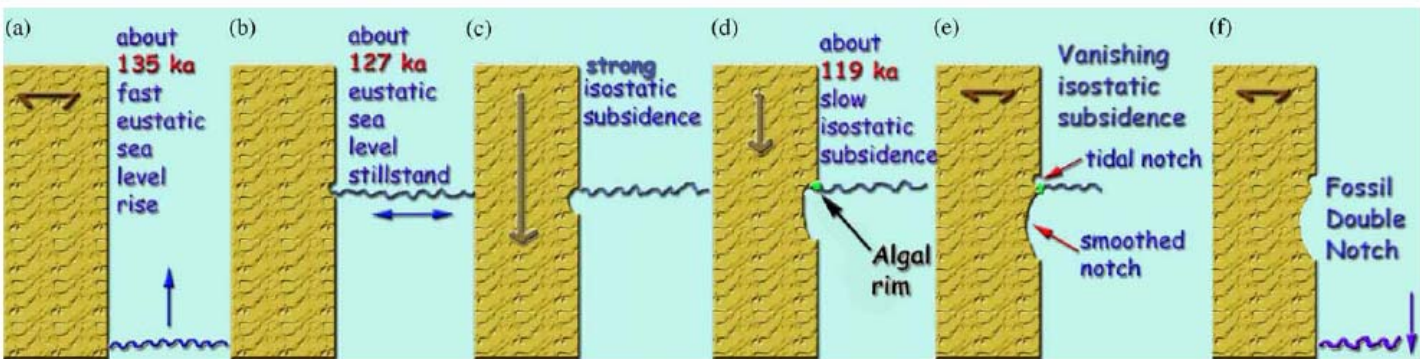
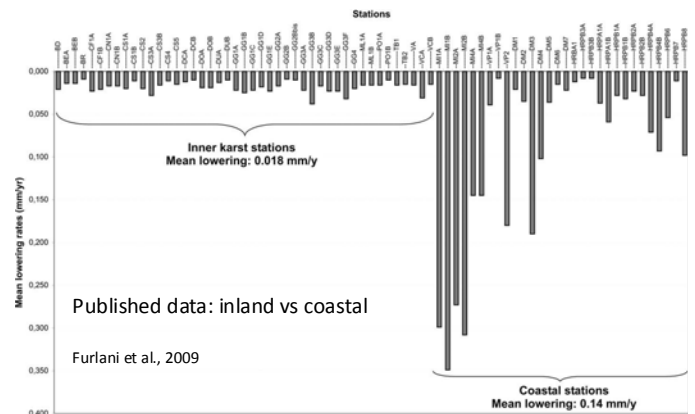
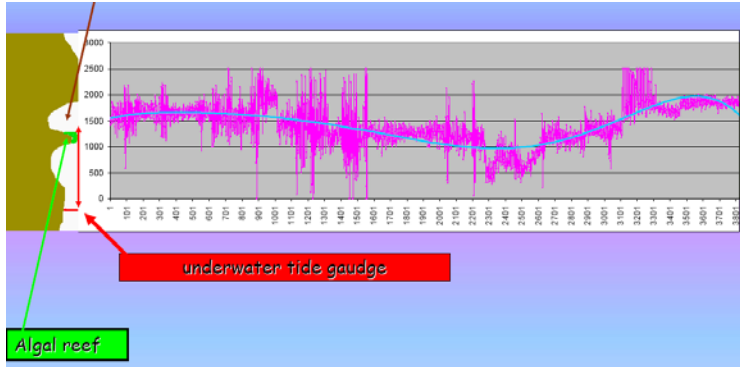


Fig. 11. Interpretation of the marine notches carving process including the contribution of isostasy (see Section 5).



We will discuss the tidal notches formation and the erosional rates using MEM.

References

- Antonioli, F., Dai Pra, G., Hearty, P. J., 1988. I sedimenti quaternari nella fascia costiera della Piana di Fondi (Lazio meridionale). *Bollettino Società Geologica Italiana* 107, 491–501.
- Antonioli F., Frezzotti M. & Valpreda E. 1988. Evoluzione geologica della Piana di Fondi e delle aree marginali durante il Quaternario. *Memorie descrittive della Carta Geologica d'Italia. Vol. XXXVIII*, 97-124. **Carta geomorfologica. 1:40.000.**
- Antonioli F., Conato V. & Dai Pra G. 1989. Biostratigrafia dei sedimenti Pleistocenici affioranti sul bordo NW della piana di Fondi. (Lazio Meridionale). *Il Quaternario, Italian Journal of Quaternary Sciences*, 2, 139-145.
- Antonioli F. & Frezzotti M. 1989. I sedimenti tardo-Pleistocenici ed Olocenici compresi nella fascia costiera tra Sabaudia e Sperlonga, Italia centrale. *Memorie della Società geologica Italiana. Vol. 42*, 237-250.
- Antonioli F. & Ferranti L. 1994. La Grotta sommersa di Cala dell'Alabastro (S.Felice Circeo). *Memorie della Società Speleologica Italiana*, 6, 137-142.
- Antonioli, F., 1991. Geomorfologia subacquea e costiera del litorale compreso tra Punta Stendardo e Torre S. Agostino (Gaeta). *Il Quaternario* 4 (2), 257–274.
- Antonioli F., Kershaw S., Ferranti L., 2006. A double MIS 5.5 marine notch ? *Quaternary International* 145-146, 19–29.
- Antonioli F., Anzidei M., Auriemma R., Gaddi D., Furlani S., Lambeck K., Orrù P., Solinas E., Gaspari, A., Karinja, S., Kovačič V., Surace L. (in print, 2007) Sea level change during Holocene from Sardinia and northeastern Adriatic from archaeological and geomorphological data. *Quaternary Science Review*.
- Blanc, A. C., Segre, A., 1953. *Le Quaternaire du Monte Circeo. Livret-Guide, IV Congr. INQUA, Roma*, pp. 23-108.
- Blanc, A. C., Segre, A., 1953. *Le Quaternaire du Monte Circeo. Livret-Guide, IV Congr. INQUA, Roma*, pp. 23-108.

- Devoti S., Antonioli F., Bergamin M., Nisi S., Silenzi S., (2004) 40-ky history of sea level oscillations from marine and lagoonal fossils in a core from Fondi plain. *Quaternaria Nova*, VIII, 213-228.
- Durante S., Settepassi F. 1974. Livelli marini e molluschi tirreniani alla Grotta delle Capre (Circeo). *Memorie dell'Istituto Italiano di Paleontologia Umana* 2: 285–296.
- Ferranti L., Antonioli F., Amorosi A., Dai Prà G., Mastronuzzi G., Mauz B., Monaco C., Orrù P., Pappalardo M., Radtke U., Renda P., Romano P., Sansò P., Verrubbi V. (2006) Elevation of the last interglacial highstand in Sicily (Italy): A benchmark of coastal tectonics. *Quaternary International* 145–146, 30–54.
- Ferranti L., Antonioli F., Anzidei m., Monaco C., Stocchi P., (2010) The timescale and spatial extent of vertical tectonic motions in Italy: insights from relative sea-level changes studies. *Journal of the Virtual Explorer, Electronic Edition*, ISSN 1441-8142, 36, paper 30.
- Furlani S., Cucchi F., Forti F., Rossi A. (2009) Comparison between coastal and inland Karst limestone lowering rates in the northeastern Adriatic Region (Italy and Croatia). *Geomorphology*, 104, 73-81.
- Furlani S., Cucchi F., Odorico R. (2010) A new method to study microtopographical changes on vertical rock surfaces: one year of TMEM measurements in the intertidal zone. *Zeitschrift fur Geomorphologie*. 54, Suppl. 2, 137-151.
- Furlani S., Biolchi S., Cucchi F. (2011): Notches in the Northern Adriatic Sea: genesis and development. *Quaternary International*, doi:10.1016/j.quaint.2010.06.010.
- Hearty, P. J., Dai Pra G. 1987. Ricostruzione palaeogeografia degli ambienti litoranei quaternari della Toscana e del Lazio settentrionale con l'impiego dell'Aminostratigrafia. *Bollettino Servizio Geologico d'Italia* 106, 189-224.
- Hearty PJ, Dai Pra G. 1986. Aminostratigraphy of quaternary marine deposits in the Lazio Region of central Italy. *Zeitschrift für Geomorphologie, Supplementband* 62: 131–140.
- Lambeck K., Anzidei M., Antonioli F., Benini A, Esposito E., (2004) Sea level in Roman time in the Central Mediterranean and implications for modern sea level rise. *Earth and Planetary Science Letter*, 224 563-575.
- Kershaw S., Antonioli F., 2004. Tidal notches at Taormina, east Sicily: why is the mid-Holocene notch well-formed, but no modern notch is present in the same locality? *Quaternaria Nova*, VIII, 155-170.
- Nisi M.F., Antonioli, F., Dai Pra, G., Leoni, G., Silenzi S., 2003. Coastal Deformation between the Versilia and the Garigliano plains (Italy) derived from the elevations of the Last Interglacial stage. *Journal of Quaternary Science*, 18, 709-721.
- Ozer A., Demoulin F., Dai Pra G, 1987. Les indices morphologiques temoin de la stabilite tectonique de la bordure littorale du Lazio meridional (Italie). *Z. fur Geomorph.* Bd 63, 103-117.
- Segre AG. 1991. *Geomorphologie et stratigraphie de la Grotte Guattari au Mont Circe´* (LT). *Quaternaria Nova* 1, 97–106.
- Segre AG. 1967. Terreni quaternari del bassopiano pontino e della Pianura di Fondi. In *Note illustrative della Carta Geologica d'Italia (scala 1:100.000)-F _ 159 Frosinone e F _ 160 Cassino*. Poligrafico Zecca Sato: Roma; 77 pp.